



School House Barn

1a Dotcliffe Road | Kelbrook | BB18 6TL

MSW HEWETSONS



School House Barn

Guide Price of £375,000

1a Dotcliffe Road | Kelbrook
BB18 6TL

A high-quality stone built barn conversion situated in the popular and accessible village of Kelbrook. The property has the benefit of high-quality fixtures and fittings including full gas-fired central heating, double-glazed windows and doors, oak boarded flooring, high-quality bathrooms with travertine tiled flooring, integral garage, private patio gardens. Excellent decorative order throughout.

The property is constructed of stonework with pitched slate roof supported on timber. The property is available with no forward chain.

Reception Hallway

Sealed unit double-glazed timber effect entrance door, oak boarded flooring, single panel central heating radiator, low-voltage spotlighting, timber balustrade staircase leading to first floor accommodation and understairs store with timber boarded door.

Sitting Room

The principal reception room to the property which has been formed from the original rear barn with timber trusses, a lovely open room with twin sealed unit double-glazed timber effect

windows and matching French doors to the rear elevation. Two double panel central heating radiators, oak boarded flooring, timber trussed ceiling, three sealed unit double-glazed Velux skylights. Cast-iron log-burning stove set on stone flagged hearth.

Snug Room / Bedroom Four

Sealed unit double-glazed hardwood window to front elevation, single panel central heating radiator, oak boarded flooring, beamed ceiling and low-voltage spotlighting.

Dining Room

Sealed unit double-glazed hardwood window to front elevation, double panel central heating radiator, oak boarded flooring, beamed ceiling and low-voltage

spotlighting.

Kitchen

Range of quality fitted base and wall units with peninsular breakfast bar with complimentary work surfaces and tiled splash backs. Single drainer stainless steel sink unit with mixer tap, built-in 'Schott Ceran' oven comprising six-ring gas hob, hotplate, double oven and grill with glazed and illuminated brushed steel extractor canopy. Oak boarded flooring, double panel central heating radiator, Velux skylight, sealed unit double-glazed hardwood window to gable elevation.

Particulars of sale

Garage

Attached large single garage with electrically operated up and over door. Plumbed for automatic washing machine and dryer. Wall-mounted gas boiler providing central heating and domestic hot water.

Separate WC

Within the garage separate partition WC with pedestal wash hand basin, low-level WC, extractor fan and light.

First Floor

Staircase

Traditional timber return staircase.

Landing

Open landing with original timber trussed ceiling, sealed unit double-glazed Velux skylight and low-voltage spotlighting.

Bedroom One

Sealed unit double-glazed hardwood window to front elevation, single panel central heating radiator, timber trussed ceiling, low-voltage spotlighting, roof void storage areas and fitted wardrobes.

En-Suite Shower Room

Comprising travertine tiled shower, pedestal wash hand basin, low-level WC, travertine tiled half walls and floor, sealed unit double-glazed Velux skylight, extractor fan and chrome radiator towel rail.

Bedroom Two

Sealed unit double-glazed hardwood window to front elevation, single panel central heating radiator, timber trussed ceiling and low-voltage spotlighting.

Bedroom Three

Sealed unit double-glazed hardwood window to gable elevation, single panel central heating radiator and timber trussed ceiling.

House Bathroom

Containing three-piece suite comprising handle-grip panel bath, pedestal wash hand basin, low-level WC, travertine tiled floors, half walls and bath panels. Sealed unit double-glazed leaded Velux skylight, chrome radiator towel rail and low-voltage spotlighting.

External

Forecourt

To the front of the property is a stone flagged forecourt with chain link fence and tarmacadam corner of sufficient size to park a car.

To the rear of the property is a large stone flagged patio garden with raised barbeque area and surrounding dry stone wall.

Parking

Hard core parking area big enough to park two vehicles accessed by private lane to the side of the property.

Services

Mains electricity, mains water, mains gas and mains sewerage.

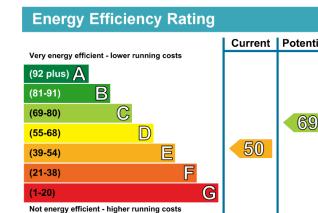
Council Tax

Band 'D'

Tenure

Freehold with the benefit of vacant possession upon legal completion.

Please Note: MSW Hewetsons, their clients and any joint agents give notice that; They are not authorised to make or give any representations or warranties in relation to the property either here or elsewhere, either on their own behalf or on behalf of their client or otherwise. They assume no responsibility for any statement that may be made in these particulars. These particulars do not form part of any offer or contract and must not be relied upon as statements or representations of fact.

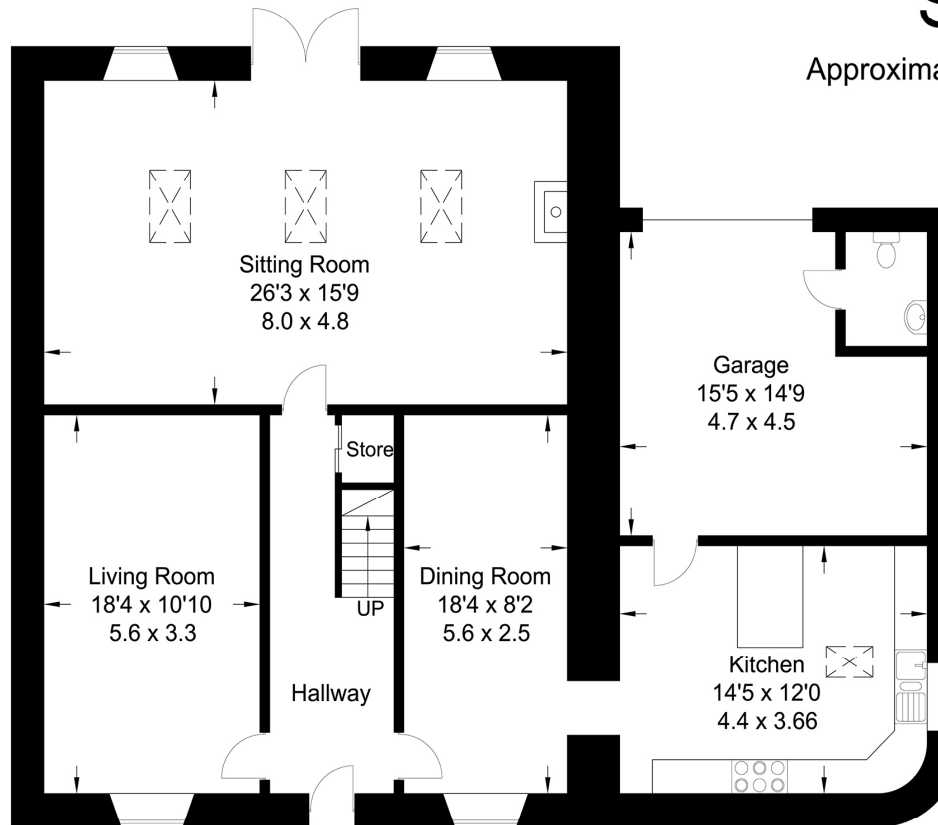


School House Barn

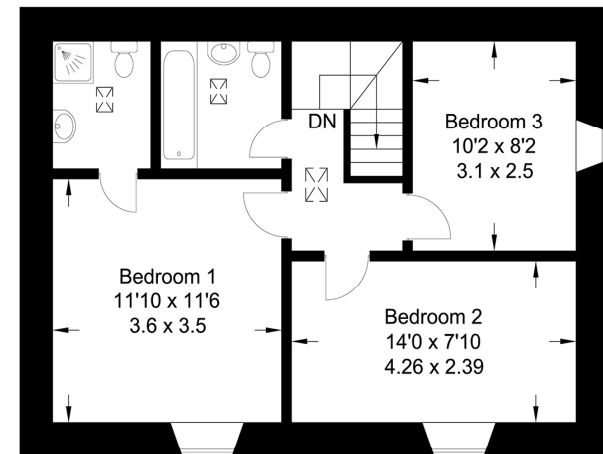
Approximate Gross Internal Area : 149.47 sq m / 1608.88 sq ft

Garage : 21.15 sq m / 227.65 sq ft

Total : 170.62 sq m / 1836.53 sq ft



Ground Floor



First Floor

For illustrative purposes only. Not to scale
Whilst every attempt was made to ensure the accuracy of the floor plan, all measurements are approximate and no responsibility is taken for any error







MSW HEWETSONS

01200 42 41 42 www.mswhewetsons.co.uk

MSW Hewetsons | 6 Church Street | Clitheroe | Lancashire | BB7 2DG